

INSTALLATION INSTRUCTIONS

SuperSorb® Carbon Filter Pads

Fryer type: Restaurant Technology Inc.

Pad type: SuperSorb® Carbon Pad F-68A / F-81 (Pad size inch: 18.25 × 25.5 / 15 × 21)
(Pad size cm: 46.35 × 64.75 / 38.1 × 53.35)



GENERAL INFORMATION

- Make sure the filter-pan is clean and dry.
- Carbon Pad has always to be placed into the pan with "bumpy side" up.
- Please do not use any filter-powders in addition to the SuperSorb Carbon Pad.
- Always wear protective apparel or refer to your companies OPS.



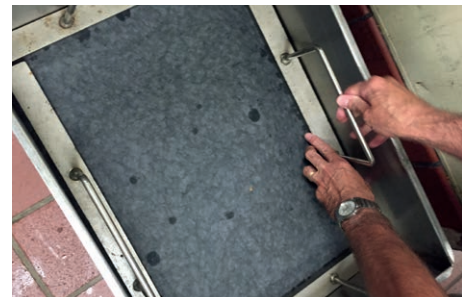
STEP 1

Clean the filter pan and pad holder with water and wipe dry. Do not pump water through the filter pump. Place the support screen in the center of the pan.



STEP 2

Insert Carbon Pad into the pan with the bumpy side up (smooth side down).



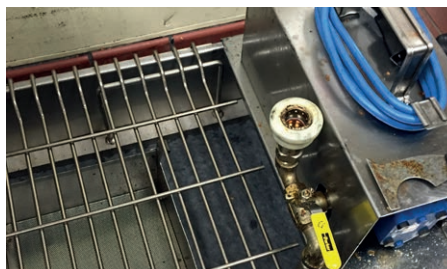
STEP 3

Place 4 hold down weights and press firmly next to edge of all 4 sides.



STEP 4

Place grid cover and crumb basket on filter bucket.



STEP 5

Place motor housing over open end and insert bucket hose to motor quick connection.