

INSTALLATION INSTRUCTIONS

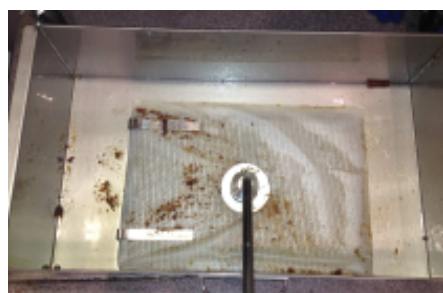
SuperSorb® Carbon Filter Pads

Fryer type: Henny Penny Open Vat & Pressure Fryer
Pad type: F-74 & F-91 SuperSorb® Envelope



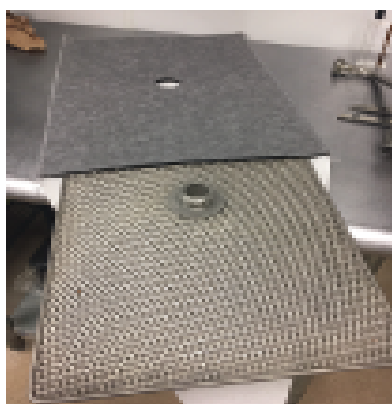
GENERAL INFORMATION

- **Make sure the filter-pan is completely clean and dry. Any remaining water in the pan or on the screen can damage the envelope bottom paper side of the filter.**
- Always use a new SuperSorb Envelope every day.
- After filtering carefully scrape the crumb debris off the SuperSorb Envelope using a spatula or putty knife.
- **Do not use any filter-powders** with the SuperSorb Envelope
- Always wear protective apparel or refer to your companies OPS.



STEP 1

First, remove paper filter and thoroughly clean and dry all parts.



STEP 2

Open the Filtercorp SuperSorb® Envelope paper sealing flap. Insert screen and coupler screw into the SuperSorb envelope. Line up with open hole.



STEP 3

Close sealing flap over the Henny Penny screw. Using the 2 metal clips, insert over sealing flap. Lay the crumb tray over the Filtercorp envelope sealing flap and screw.



STEP 4

Attach suction pipe onto the screw coupler along with crumb plate to the SuperSorb Envelope.



STEP 5

SuperSorb® Envelope filter is now ready to be installed into the filter pan.

- F-91 SuperSorb® Envelope, 13.75" x 19.875"
- F-74 SuperSorb® Envelope, 12.5" x 19.875" (For new single & double vat filter pan)

